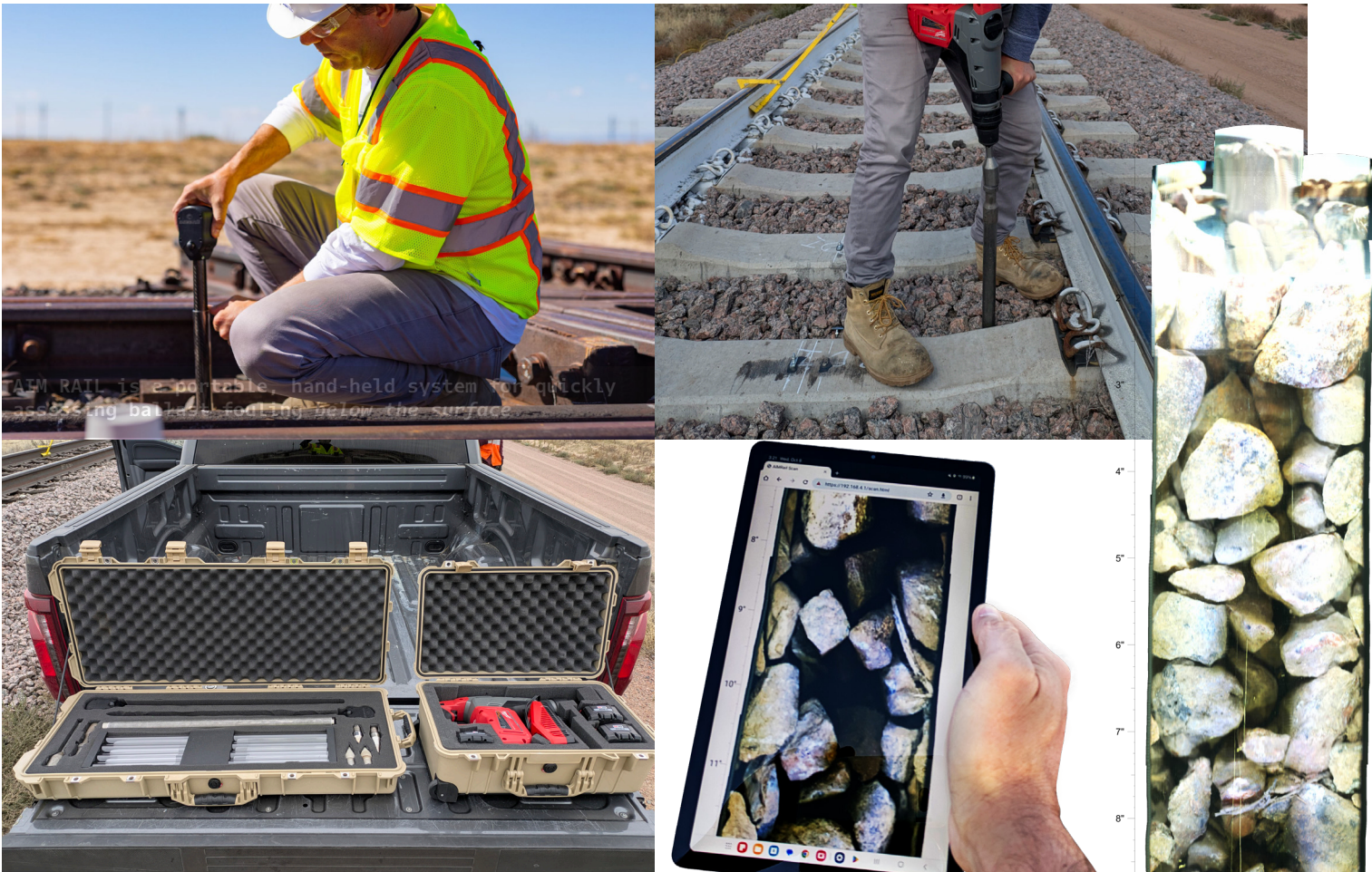


AIM RAIL

AI Measurements for Railroad Ballast Fouling Assessment



Summary

AIM Rail is a portable, hand-held system that lets you actually see ballast fouling below the surface.

It uses a simple yet elegant method for creating and maintaining a hole in ballast, and an imaging probe to capture a full-depth picture. Sophisticated AI models convert the image into ballast fouling metrics, by depth.

Features

- Up to 24-inch depth of investigation
- 180° FOV per pass
- One-person operation
- Viewable in real-time on any mobile device
- GPS location
- Cloud server database

Benefits

- Direct imaging of in situ subsurface ballast
- Reaches and images key fouling horizons
- Operable with minimal training
- Overcomes human bias with quantification
- GPR ground-truthing